



Gallatin Gateway Schools – PreBond Planning

Explore Phase Workshop
07.30.2020





Gallatin Gateway Schools – PreBond Planning

Project: Building Committee Explore Phase Workshop

Date & Time: 6:30 – 8:00 pm July 30th, 2020

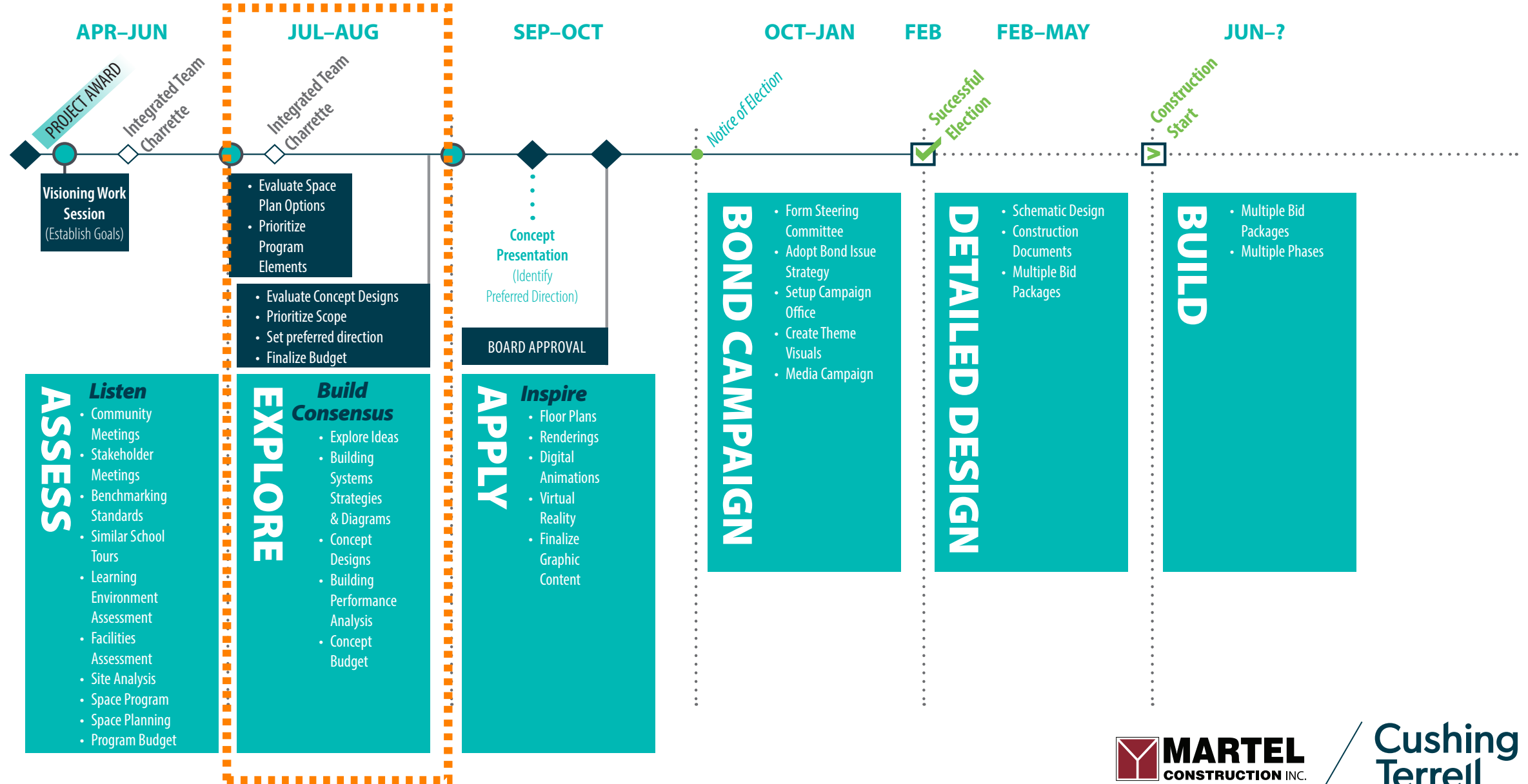
Building Committee Homework

- Review Assess Phase Summary presented at the Board Meeting

Explore Workshop Agenda

1. Recap Guiding Principles & Assess summary
2. Review Community Survey Results
3. Present Preliminary Exploration Concepts
 - a. Keep/toss exercise
 - b. Evaluate & refine concepts
4. Next Steps
 - a. Explore phase huddle (Building Committee prep for community listening session) – confirm date - August 11 or 18 (via zoom)
 - b. Community and stakeholder listening sessions – August 25 – review options for what this can look like

Project Approach Timeline





Guiding Principles:

- Safe, Secure, Warm, and Inviting
- Affordable to the Community
- Long Term Plan & Solution
- Addresses Future Tech & Pedagogies
- Flexible & Adaptable Facilities
- Efficient, Operational & Maintainable
- Student Centered Quality Education
- Adequate Infrastructure & Transportation
- Provides Strong Community Connections
- Unity & Parity for all Students & Families
- Celebrates Heritage & Region
- Connections to the World Beyond



Guiding Principles - Primary Goals – Top Needs



Design that Supports Your Strategic Plan:

- Safety & Security
- Student Centered
- Community Engagement
- Culture of Collaboration
- Efficiency & Sustainability
- STEAM Learning Spaces
- Technology Enriched
- Adaptability & Flexibility

What 21st Century learning spaces / elements / programs / do you think would benefit Gallatin Gateway School?





Summary of Top 5 goals/vision for school renewal – Exercise:

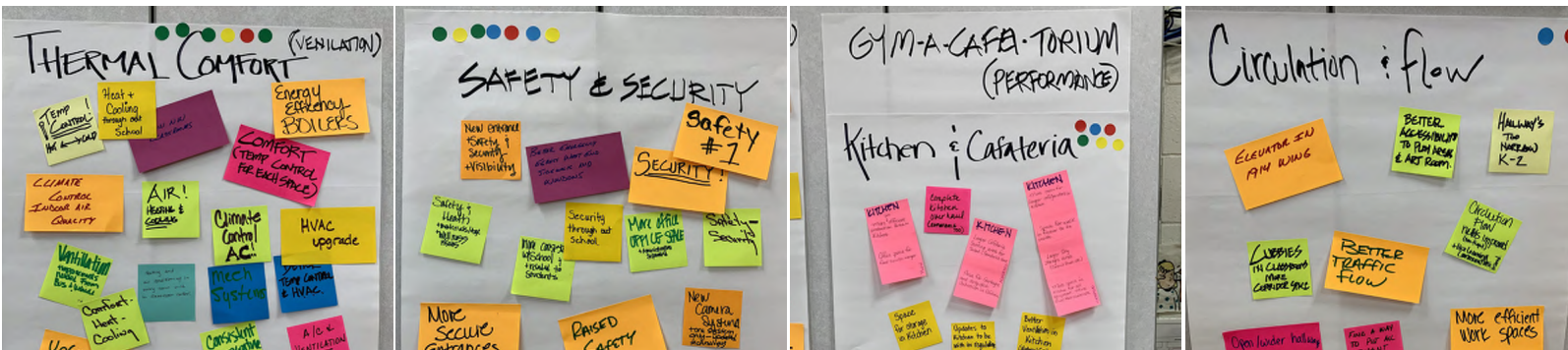
Each Building Committee member shared their top 5 goals/vision for the school renewal with the group. This information was combined with the staff's vision for school renewal. The consolidated list of goals were displayed for group discussion and the building committee started to collectively organize the top priorities.

- a. Top priorities to address include:
 - i. Thermal comfort
 - ii. Safety and Security
 - iii. Kitchen & Cafeteria (gym-a-cafe-torium type combo. for performance opportunity)
 - iv. Circulation & flow / exiting

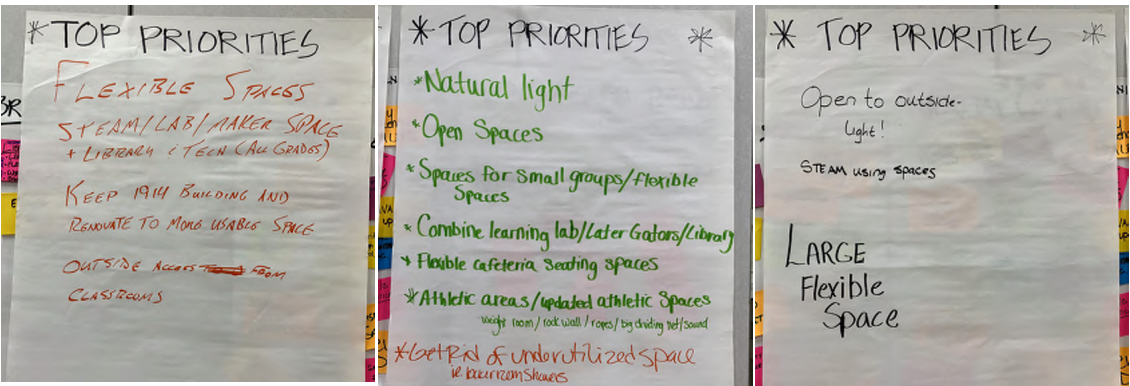
Summary of Future of School – Exercise:

A short presentation highlighting a variety of types of student centered learning environments outside of GGSD was shared with the Building Committee. Within small groups, committee members discussed what stood out of interest and applicable to Gallatin Gateway School's strategic education plan.

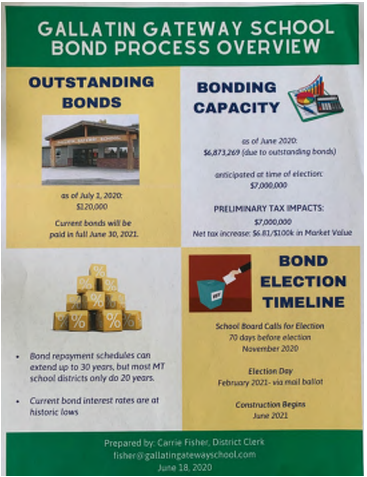
- a. Guiding principles outlined and presented from groups:
 - i. Flexible spaces
 - ii. Steam lab/maker spaces, Library, Tech – all grades
 - iii. Keep 1914 building and renovate to usable space
 - iv. Outside access from classrooms
 - v. Natural light
 - vi. Open spaces
 - vii. Spaces for small groups / flexible spaces
 - viii. Combine learning lab / later gaters / library
 - ix. Flexible cafeteria seating spaces
 - x. Athletic areas – updated space
 - i. Weight room addition / rock wall / ropes / dividing net / sound system
 - xi. Get rid of underutilized space
 - xii. Open to outside
 - xiii. STEAM learning spaces
 - xiv. Large Flexible Space



Assess Workshop - Building Committee & Staff Visioning - Primary Goals, Top Needs



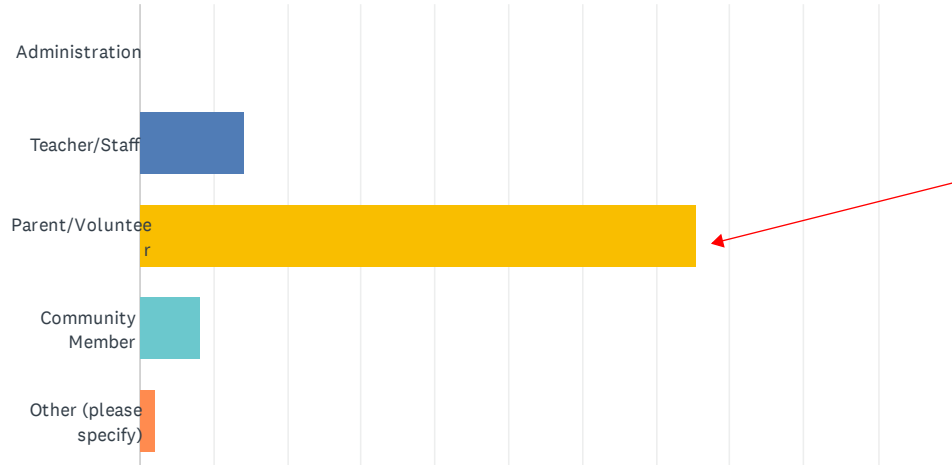
Assess Workshop - Building Committee Visioning - Guiding Principles





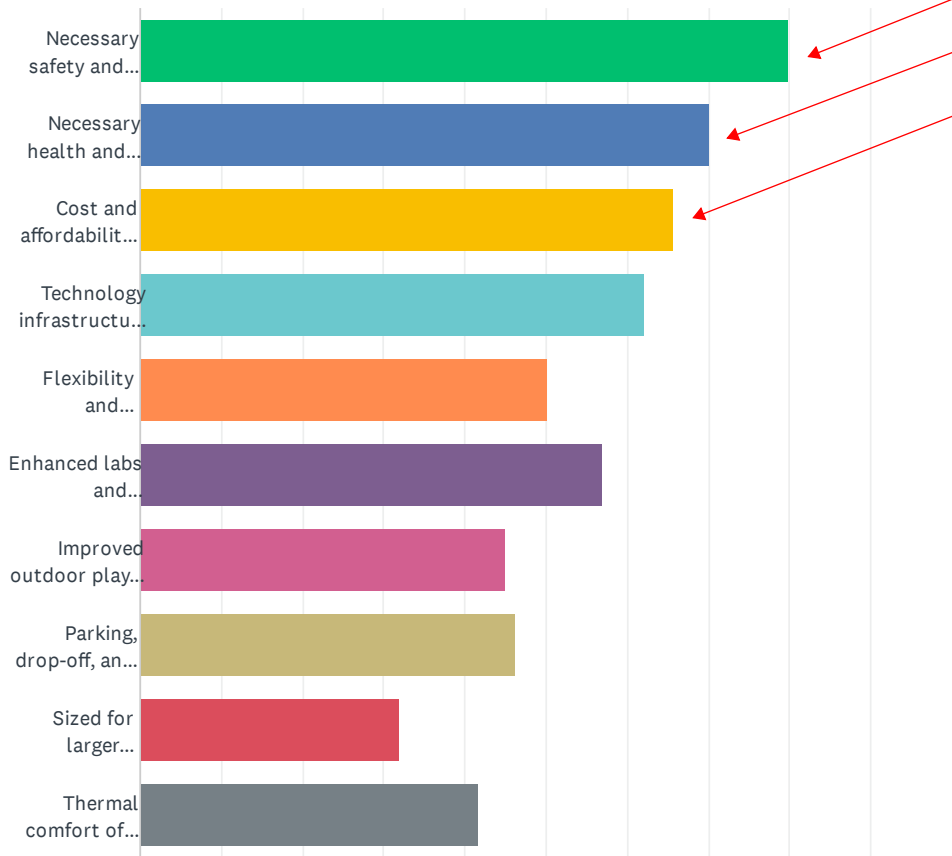
Gallatin Gateway School Community Survey Results:

School Community Survey highlights include:



The primary audience responding was from a parent/volunteer community vantage

Majority of the comments provided in the survey leaned toward a need for updating the school and or site at some capacity



- Safety and Security updates were the top priority -
- Health and Wellness updates were 2nd highest priority -
- Cost and Affordability came in as the 3rd top priority -

Working well response highlights: staff at school, community support, smaller class sizes, adapting to what is available...

What would make school better response highlights: updated spaces, HVAC/building system updates, lab spaces for everyone, library expansion, space for SpEd & meetings, more communication, age groupings not seen as fitting (keep younger separate from JH)...

What's missing response highlights: flow, spaces for labs, security, temperature control (tied to health and wellness), delivery access on site, dedicated space for nurse, athletic facilities...

Gallatin Gateway School Community Survey

For each statement, please rate your level of agreement or disagreement.

Pedestrian and vehicular traffic to and from school is separated, safe, and flows well.

The school design and systems provide adequate safety and security.

The school design and systems provide adequate health and wellness.

All parts of the school are easily accessible for all mobilities and disabilities.

The classrooms are comfortable and able to support multiple learning activities.

The meeting rooms are comfortable and able to support multiple functions and sized events.

The cafeteria is adequate for serving all lunches and easily convertible for multiple functions.

The gymnasium is appropriately sized to serve all physical activities, sports, and spectators.

The school facility is inviting and allows for a multitude of school and after-hour events.

The school infrastructure provides for needed technologies, devices and audio-visual systems.

There is adequate windows, daylighting, and shading control.

HVAC systems provide comfortable temperatures year-round, and adequate air ventilation.

The building's acoustics provide for appropriate noise mitigation and separation.

Please elaborate upon any/all of your above Agree/Disagree answers.

Strongly Agree		Agree		Neutral/Unknown		Disagree		Strongly Disagree	
4.08%	2	34.69%	17	14.29%	7	28.57%	14	18.37%	9
8.16%	4	46.94%	23	16.33%	8	22.45%	11	6.12%	3
8.33%	4	45.83%	22	27.08%	13	16.67%	8	2.08%	1
10.20%	5	22.45%	11	34.69%	17	28.57%	14	4.08%	2
10.20%	5	57.14%	28	10.20%	5	20.41%	10	2.04%	1
10.20%	5	22.45%	11	26.53%	13	28.57%	14	12.24%	6
12.24%	6	42.86%	21	16.33%	8	18.37%	9	10.20%	5
10.20%	5	30.61%	15	6.12%	3	28.57%	14	24.49%	12
8.16%	4	51.02%	25	12.24%	6	20.41%	10	8.16%	4
6.12%	3	22.45%	11	38.78%	19	26.53%	13	6.12%	3
8.16%	4	32.65%	16	20.41%	10	32.65%	16	6.12%	3
4.08%	2	8.16%	4	38.78%	19	24.49%	12	24.49%	12
6.12%	3	18.37%	9	40.82%	20	28.57%	14	6.12%	3

Safety & Security

Improved Pathways

Secure Vestibule

Surveillance Sightlines





Kimberly Elementary



Safety & Security



Bryant Elementary School

Safety & Security

What do you like?

centralized
admin area

visibility
from office
to entry

is there opp. for raised cross
walk?bringing attention to cross walk
some how

parking crossing occurs at fire station -
comm center

is teacher lounge/meeting / admin
include offices

What doesn't align?

21st Century Learning

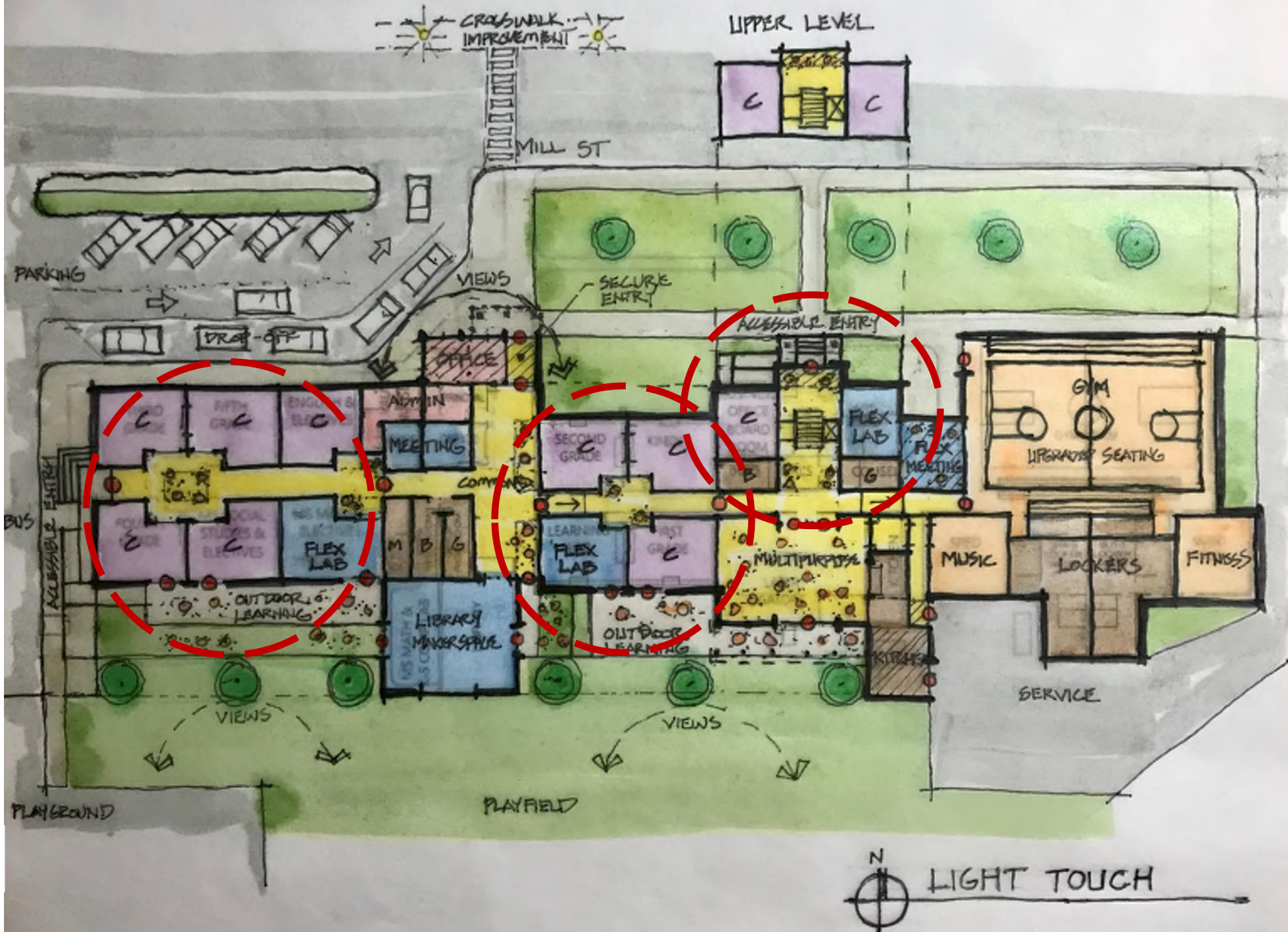
Flex Labs

Small Learning
Communities

Grade Groupings

Compartmentalization

Connection to Outdoors







Bryant Elementary





St Ignatius Elementary

STEAM, Maker Space, Flex Labs



Source: Fielding Nair International

What do you like?

flex spaces in grade groupings

flex lab storage needs -
sci./art/e/m occur with in

What doesn't align?

need for storage if the
1914 second floor goes
away

restrooms for each
grade grouping

Reimagined Libraries

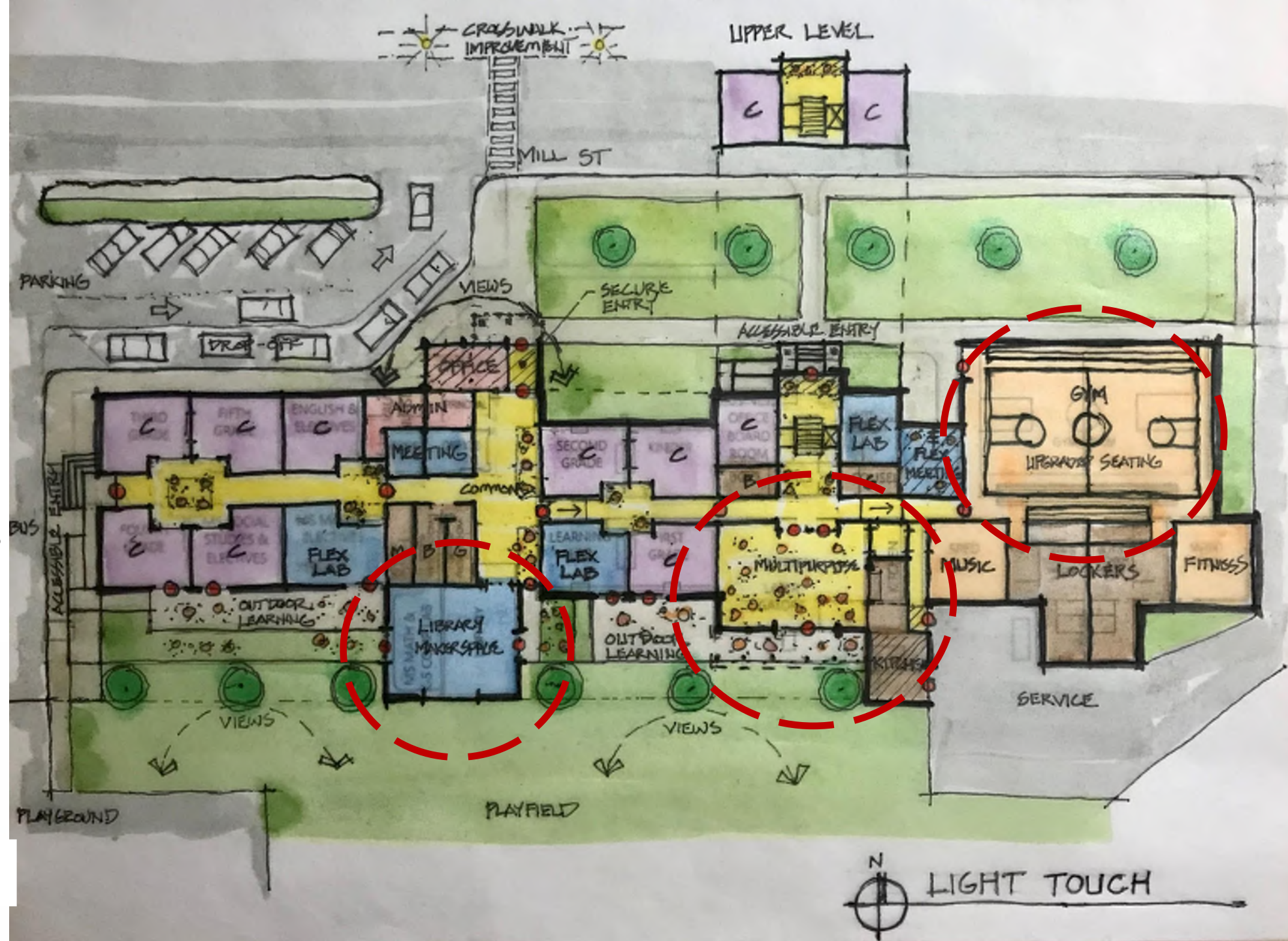
Makerspaces

New Kitchen

Multipurpose Cafetorium

Gymnasium Seating

Fitness – Health & Wellness



LIGHT TOUCH



St Ignatius Elementary

Libraries Reimagined







Stricker Elementary

Flexible - Community, Commons, Cafeteria, Activities



Willard School

Flexible - Community, Commons, Cafeteria, Activities



Bryant Elementary

What do you like?

open concept with garage
doors and natural light entering

fitness room concept - could be
accessed from gym space

gym - bleacher wall set up
expand walls in entire area -
more space for perimeter

What doesn't align?

public restroom at
gym area - to close
of that portion of
school afterhours use

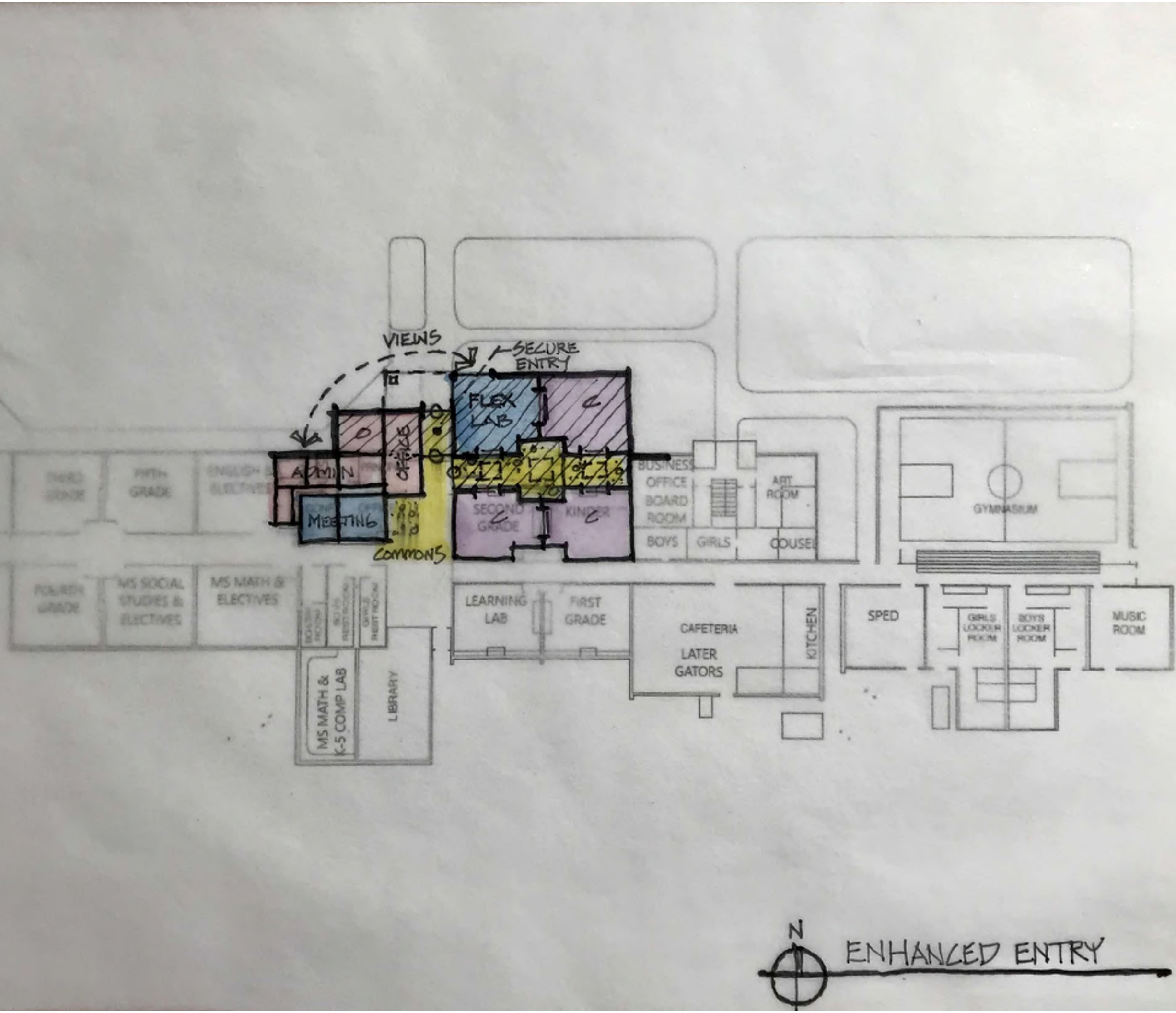
opp to reduce locker rooms? no
need for showers...

Enhanced Entry
Concept:

New secure entry and
administration offices -
increased visibility
safety & security

Classroom and flex lab
addition to the north -
separated learning
community

Site elements could
apply from Light Touch
Concept or Original
Entry Concept



What do you like?

What doesn't align?

Original Entry Concept:

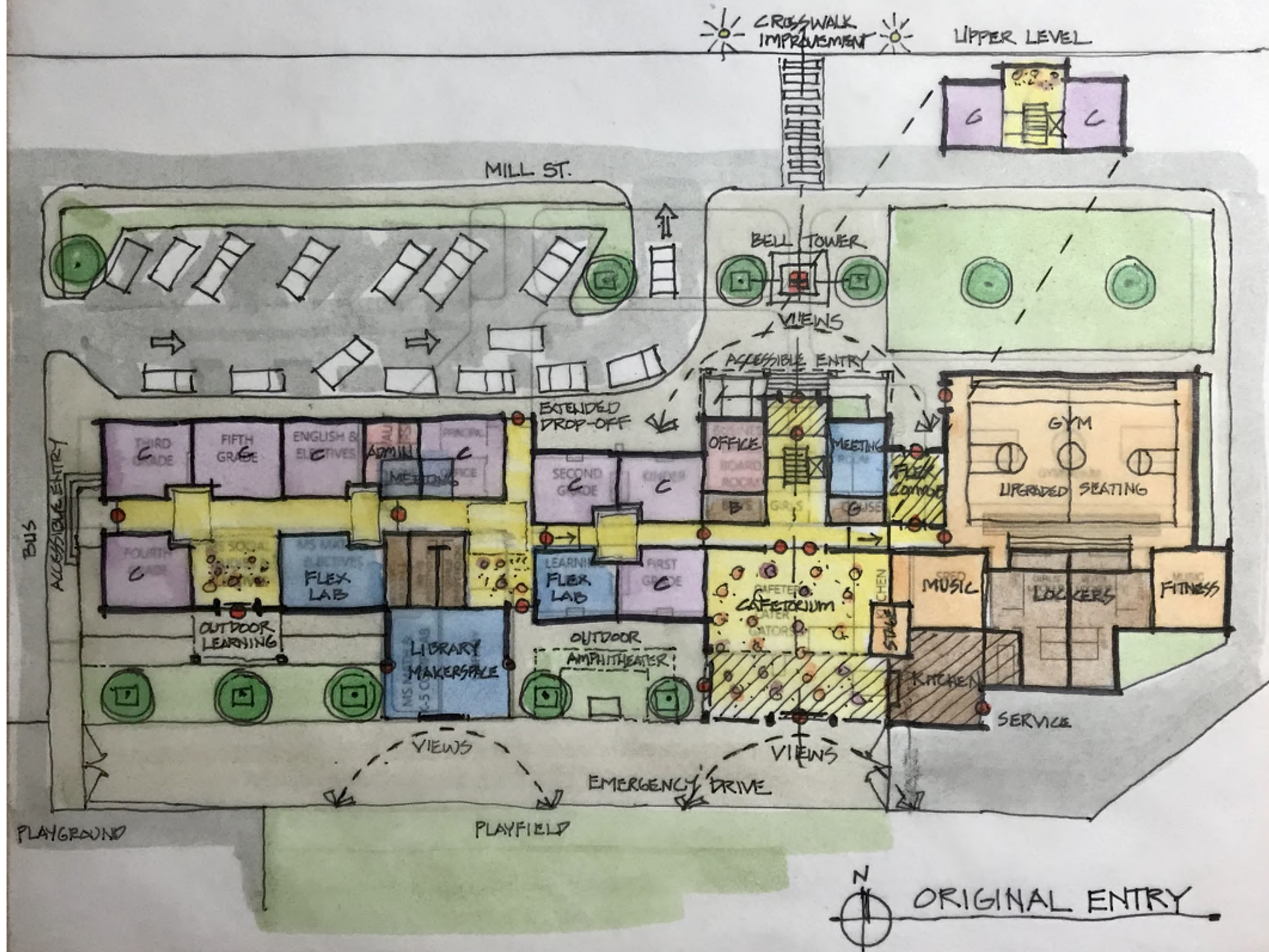
(elements that are in addition to the Light Touch concept)

New 1914 secure vestibule

Cafetorium addition

Bell tower plaza and extended drop-off

Emergency drive through play area

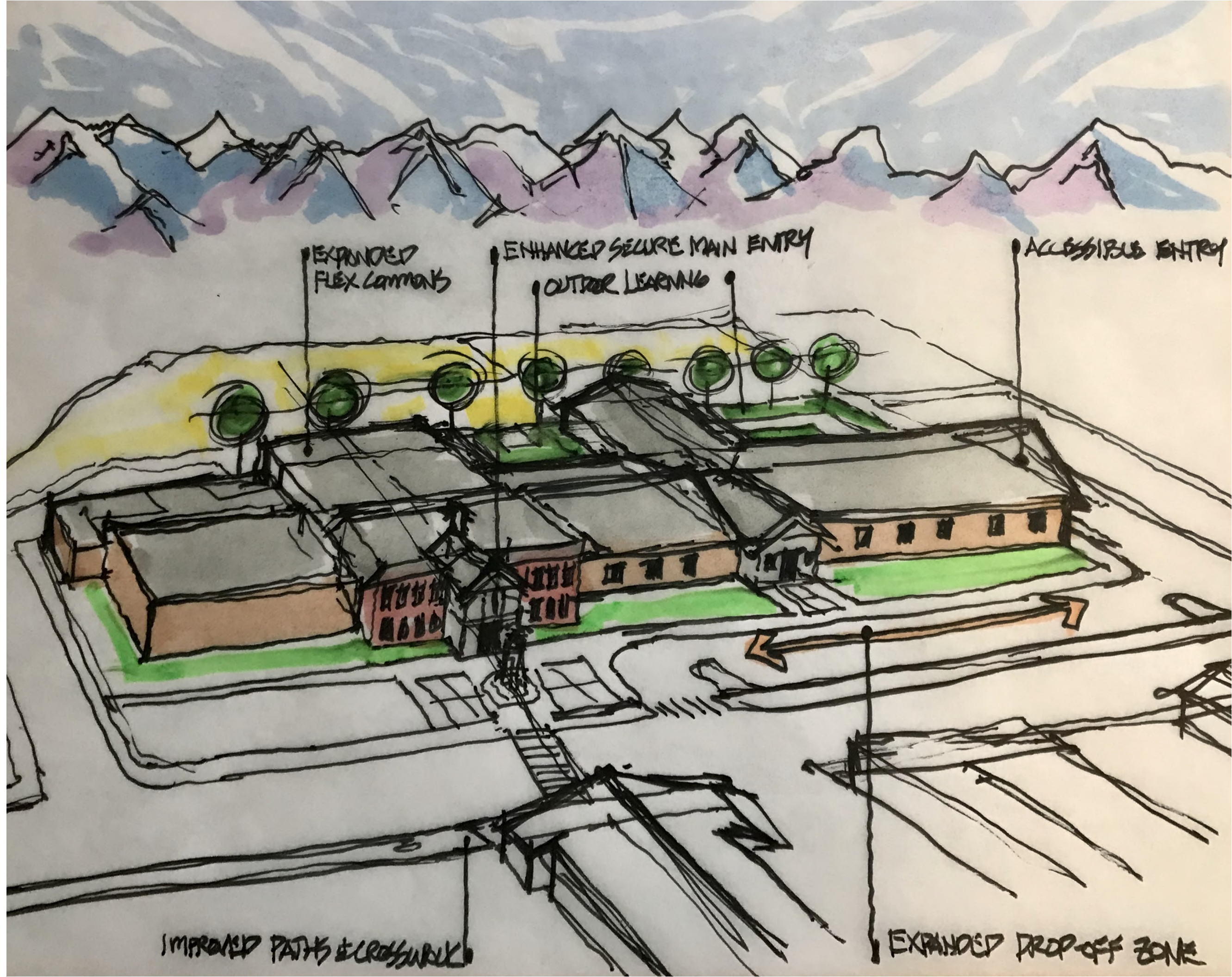


Original Entry Concept:

Entry perspective

Site circulation

Outdoor connections



What do you like?

What doesn't align?

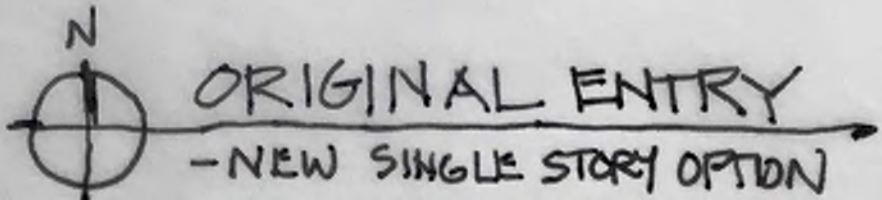
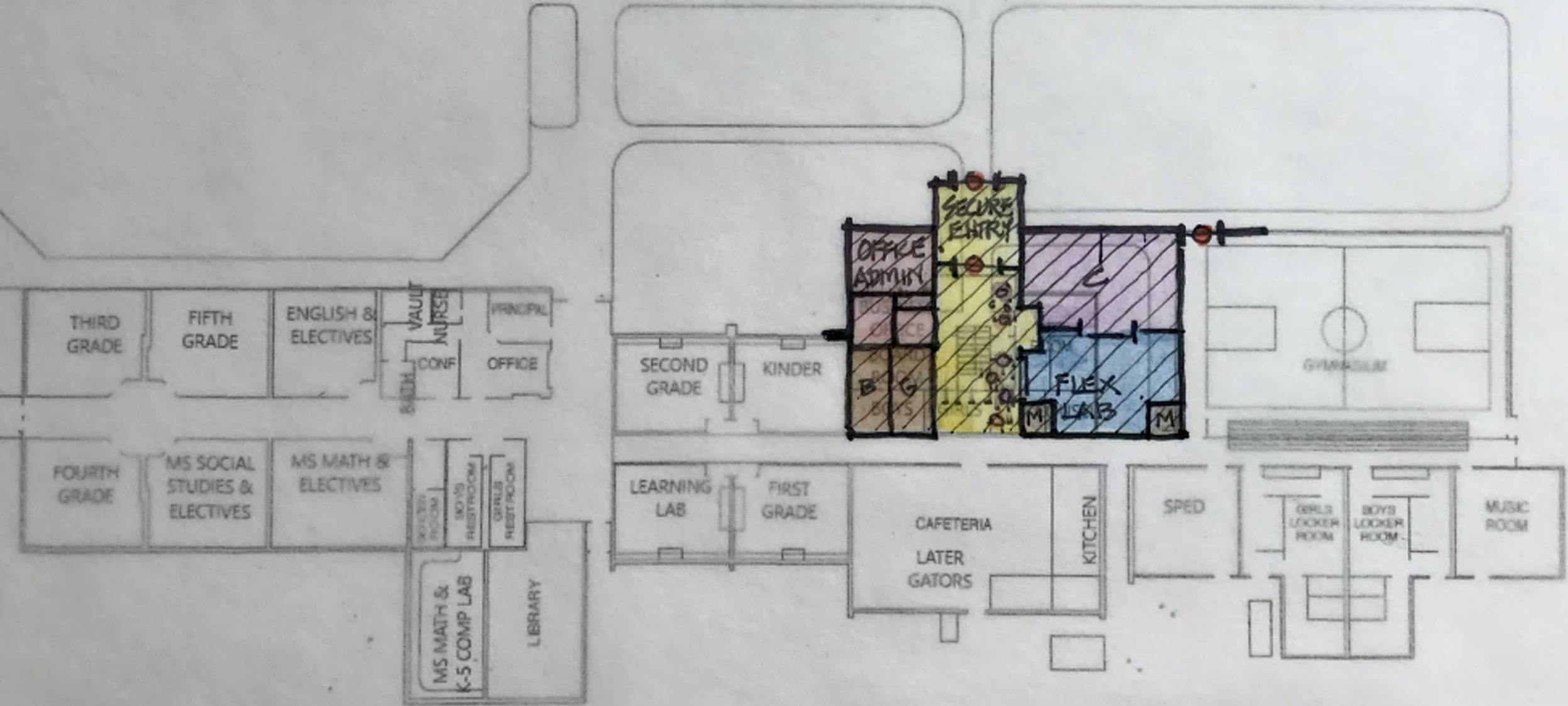
**New Single Story
Concept:**

New single story
addition in place of
the 1914 building

New secure entry and
administration offices
- increased visibility.
New mechanical/elec.
space required

New classroom & flex
lab space

Site elements could
apply from Light
Touch Concept or
Original Entry
Concept





1914 School

4,030 SF (not including the 2,400 SF unfinished basement/mech room)

2,600 SF usable / assignable

65% usable / assignable

Includes 4 small teaching stations/meeting/office spaces on two levels



New Single Story Option

4,900 SF(not including mech mezzanine)

4,250 usable / assignable

85% usable/assignable

Includes 3 large teaching stations/meeting/office spaces and commons on one level

What do you like?

What doesn't align?

Gym-A-Cafetorium Concept:

New single story
Spectator Gym
addition in place of
the 1914 building

Convert existing gym
into a multi-purpose
"Gym.A.Cafetorium"

Site elements could
apply from Light
Touch Concept or
Original Entry Concept



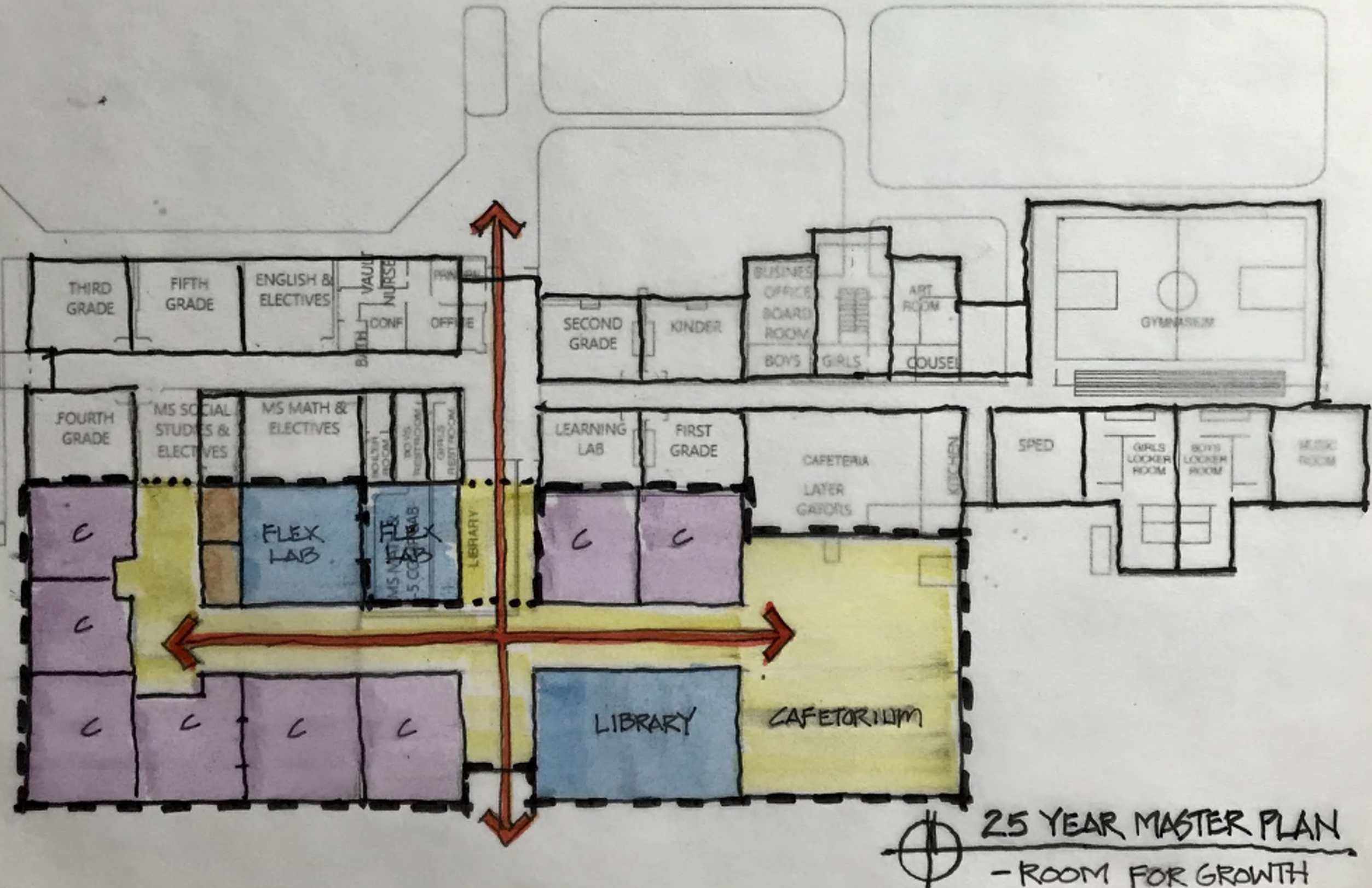
What do you like?

What doesn't align?

25 Year Master Plan/ Double the Growth Concept:

Future addition - If classroom needs double - option for expansion to the south...

Site expansion to consider with future growth



25 Year Master Plan
- Double the Growth
expanded Concept:

A range of options
could occur prior...
(ex: Enhanced Entry
Concept)

Options for future
purchase of land-

Accommodate needs
for play area and
parking expansion-

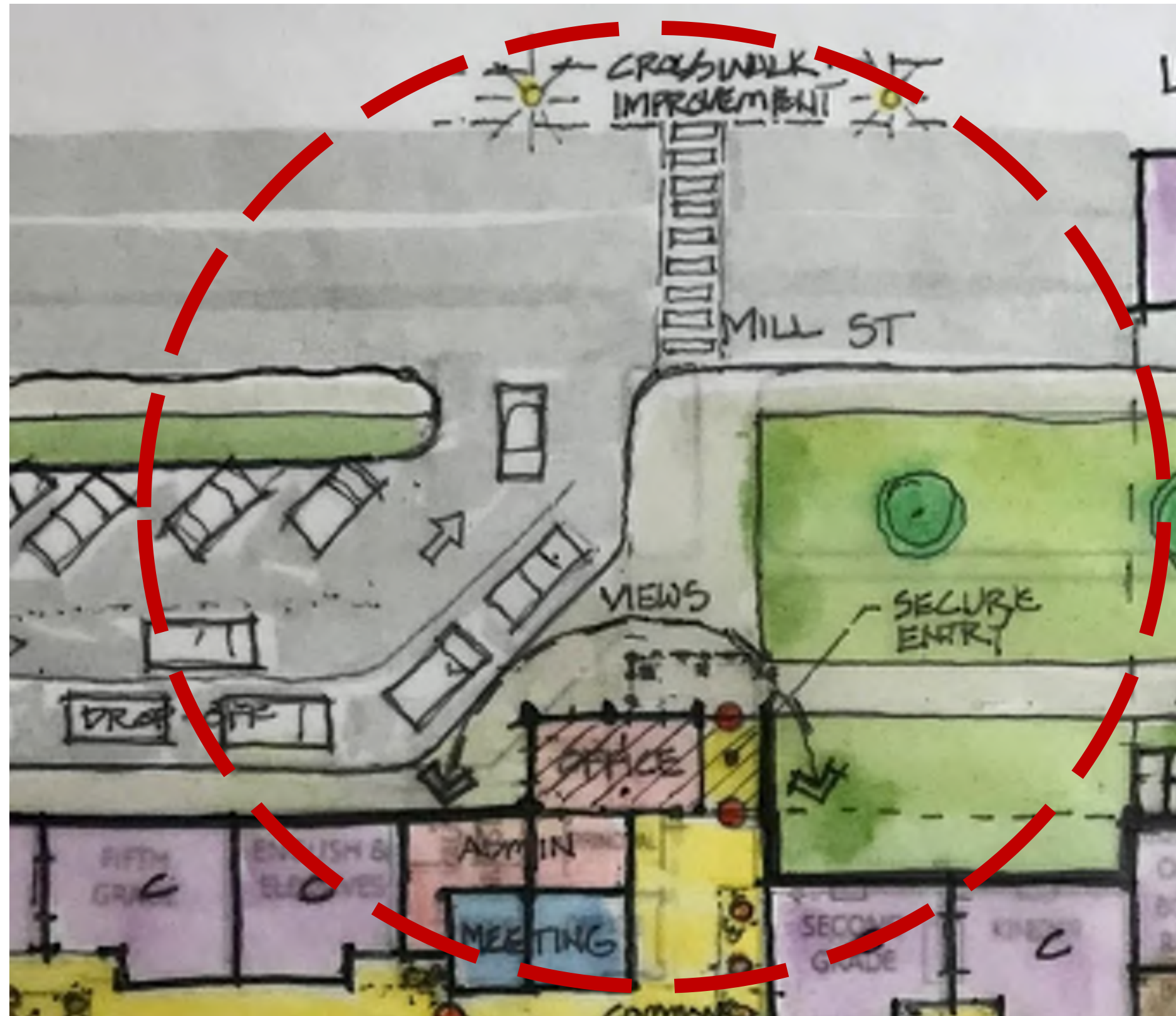


What do you like?

What doesn't align?

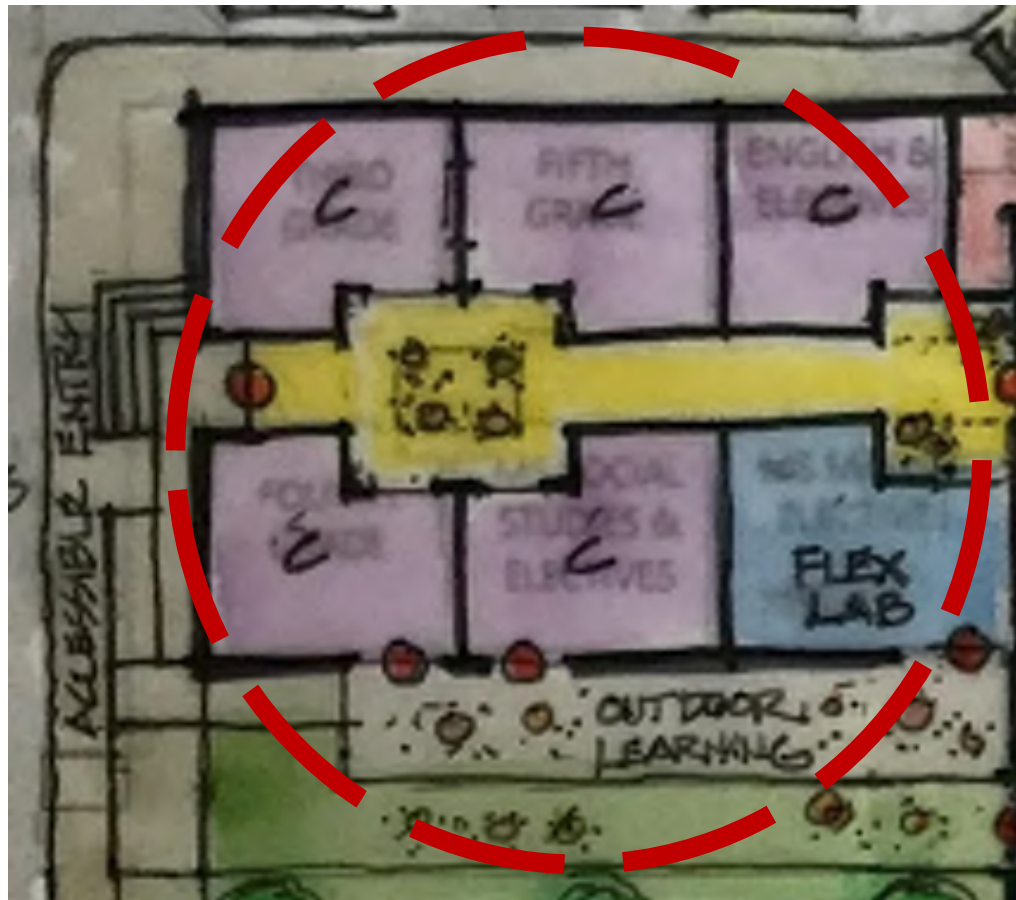
keep - toss exercise

Safety & Security
Improved Pathways
Secure Vestibule
Surveillance Sightline



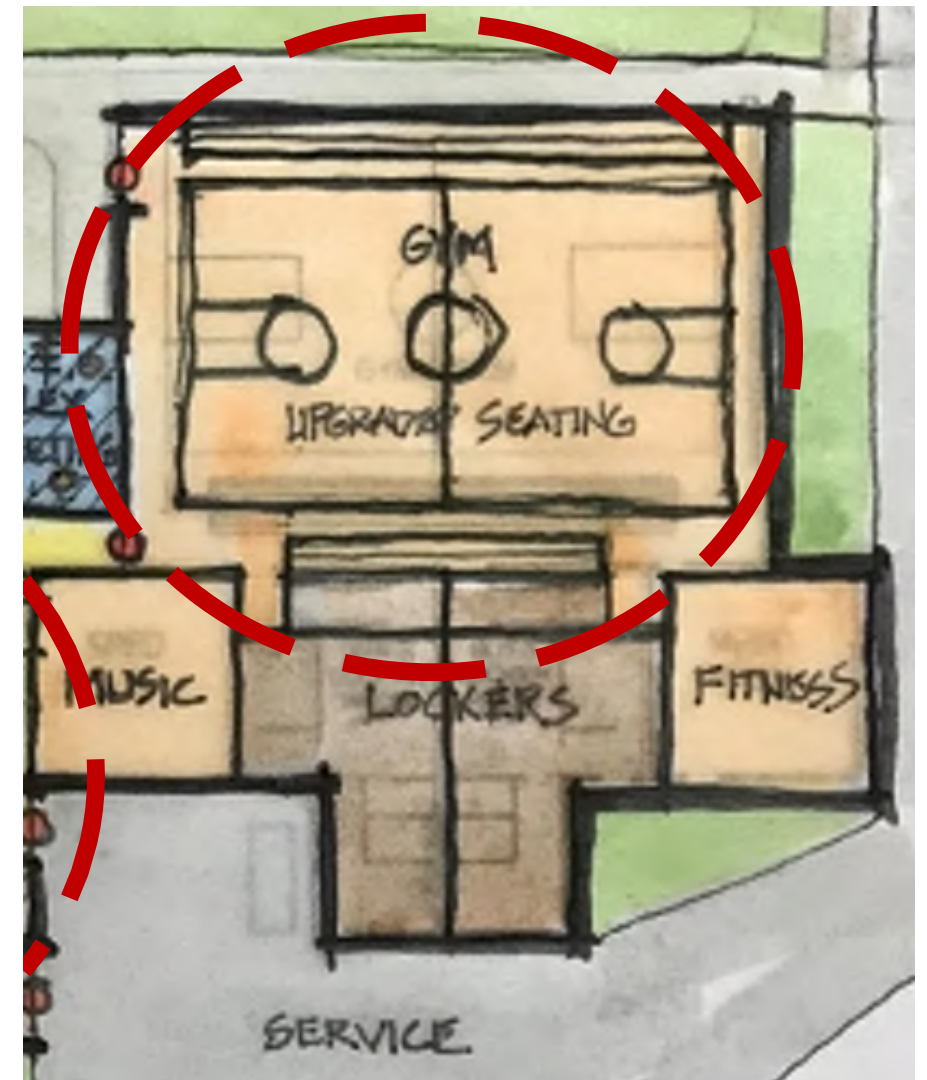
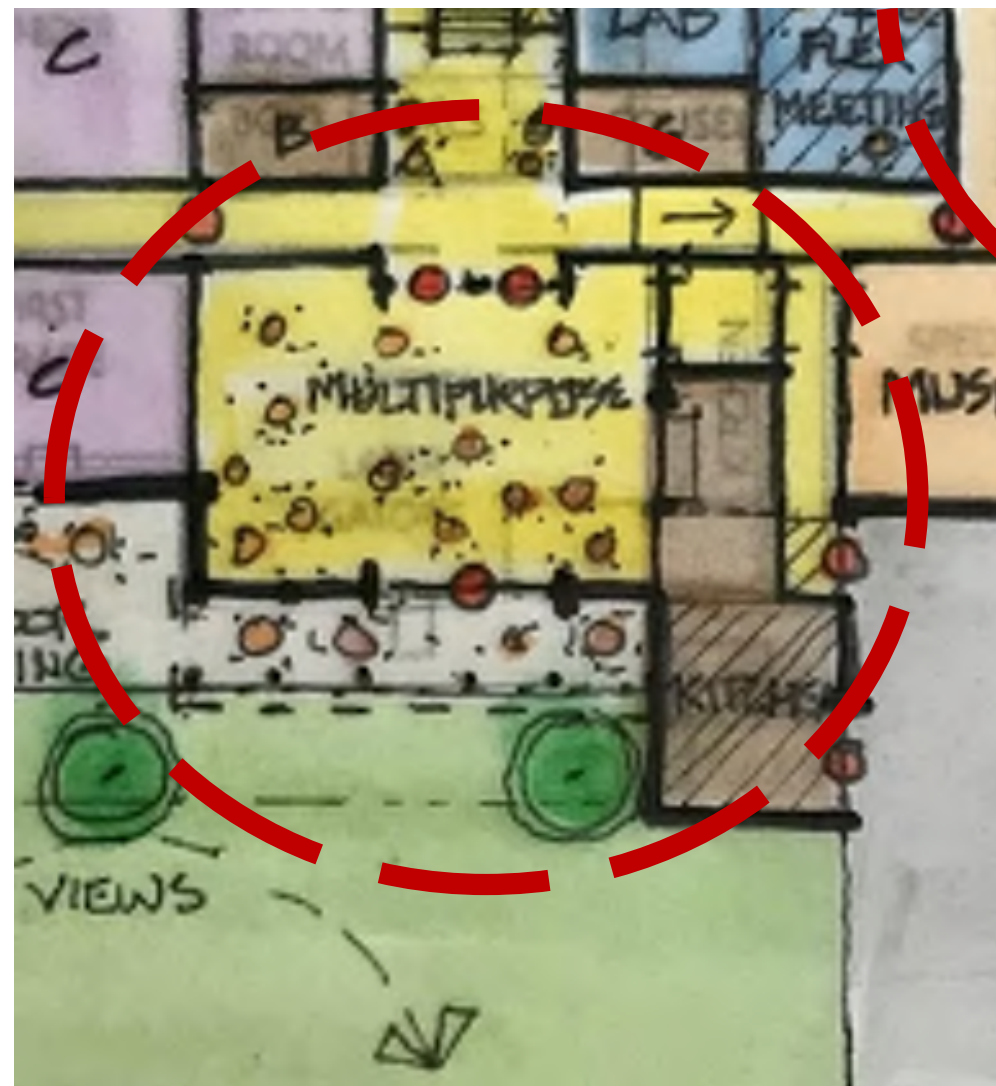
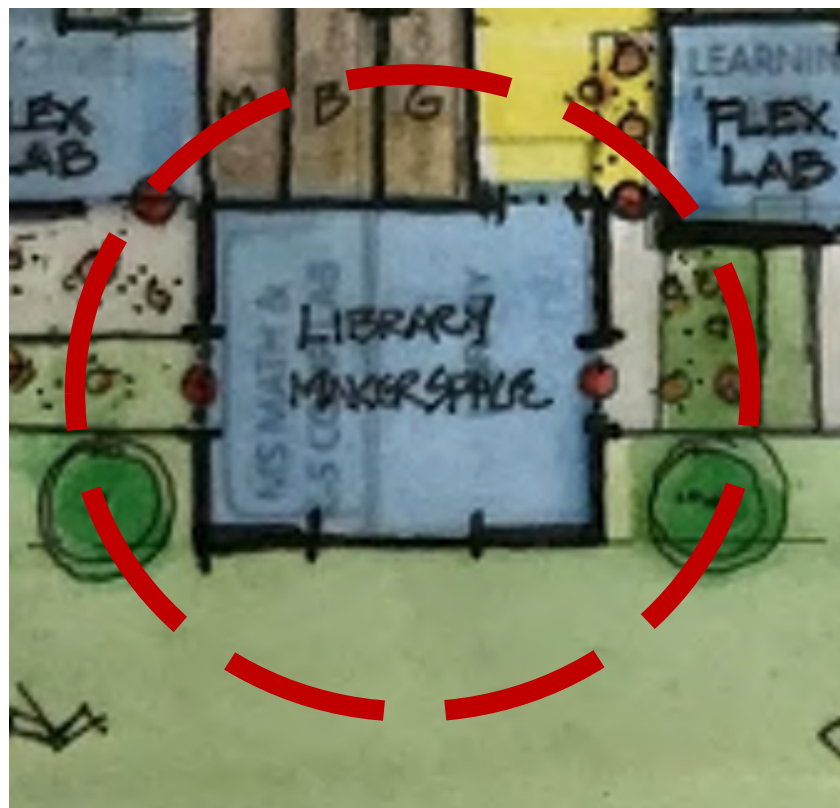
keep - toss exercise

21st Century Learning
Flex Labs
Small Learning
Communities
Grade Groupings
Compartmentalization
Connection to Outdoors



keep - toss exercise

Reimagined Libraries
Makerspaces
New Kitchen
Multipurpose Cafetorium
Gymnasium Seating
Fitness – Health & Wellness



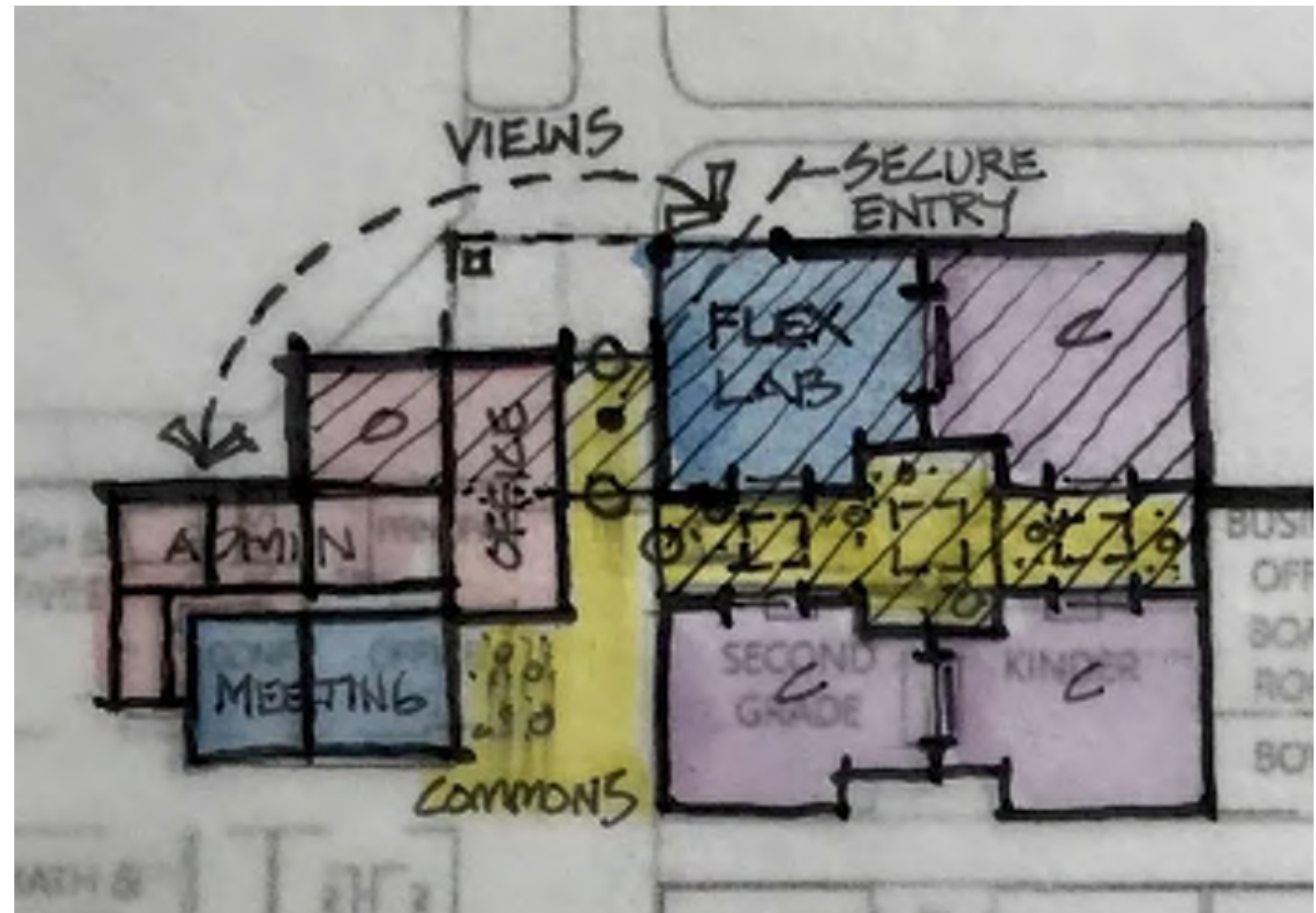
keep - toss exercise

New single story addition in place of the 1914 building

New secure entry and administration offices - increased visibility. New mechanical/elec. space required

New classroom & flex lab space

Site elements could apply from Light Touch Concept or Original Entry Concept



keep - toss exercise

New single story Spectator Gym
addition in place of the 1914 building

Convert existing gym into a
multi-purpose "Gym.A.Cafetorium"

Site elements could apply from Light
Touch Concept or Original Entry
Concept



keep - toss exercise

25 Year Master Plan - Double the Growth expanded Concept:

A range of options could occur prior...
(ex: Enhanced Entry Concept)

Options for future purchase of land-

Accommodate needs for play area and parking expansion-



4. Next Steps

- a. Explore phase huddle (Building Committee prep for community listening session) – confirm date - ~~August 11~~ or 18 (via zoom)
- b. Community and stakeholder listening sessions – August 25 – review options for what this can look like

Project Approach Timeline

